



**LAKE HOPATCONG**  
FOUNDATION



The Lake Hopatcong Foundation protects and enhances New Jersey's largest lake for present and future generations through four core pillars: Environment, Education, Community, and Advocacy.



This work includes improving water quality and preventing the spread of invasive species; fostering stewardship through student field trips, eco-cruises, and classroom-based education; strengthening community through events and year-round programming; and ensuring the lake has a voice by working with partners at every level of government to secure support and resources for a healthy, vibrant future.



Scan the code with your phone to learn more, get involved, or become a member, at [lakehopatcongfoundation.org](http://lakehopatcongfoundation.org)



LAKE HOPATCONG FOUNDATION  
125 Landing Road, Landing, NJ 07850  
[lakehopatcongfoundation.org](http://lakehopatcongfoundation.org) ♦ 973-663-2500



**EXPLORE LAKESIDE  
BUSINESSES AND  
PROTECT OUR WATERS**

**LAKE HOPATCONG**  
FOUNDATION

# PROTECT OUR WATERS FROM AQUATIC INVASIVES

Aquatic invasive species are non-native plants and animals that threaten our waters and can cause significant environmental and economic harm, impacting water quality, native plants and wildlife, and recreational experiences. They are often transported between water bodies on boats, trailers, fishing gear, and other equipment, usually without people realizing it. By taking a few simple steps every time you boat, fish, swim, or paddle, you can help prevent their spread and protect Lake Hopatcong and other waterways. Prevention is the best protection.

## CLEAN DRAIN DRY

### PROTECT OUR WATERS WITH THREE SIMPLE STEPS:

**CLEAN** your boat, trailer, and equipment after each use. Inspect everything that touched the water, including fishing gear, anchors, lines, and water toys. Remove any visible plants, mud, or debris before leaving the area. Wash your boat and equipment as soon as possible after use.

**DRAIN** all water from your boat, motor, ballast tanks, live wells, bait containers, gear, and toys before leaving the area. Many invasive species are too small to see, and survive in very small amounts of water, so draining water is a critical step in stopping their spread.

**DRY** your boat, trailer, and gear thoroughly before using them again. Allow equipment to fully dry, ideally for several days, to help ensure that any remaining organisms cannot survive.

**REMEMBER TO CLEAN, DRAIN, DRY... EVERY WATERBODY, EVERY TIME**



To learn more about protecting our waters and for detailed Clean, Drain, Dry guidance, scan the code or visit [lakehopatcongfoundation.org/clean-drain-dry](https://lakehopatcongfoundation.org/clean-drain-dry).

## KEEP WATER CHESTNUT UNDER CONTROL

Water chestnut is an invasive aquatic plant present in limited areas of Lake Hopatcong, including near Liffy Island and the Jefferson Canals. Early detection and ongoing removal by trained volunteer Water Scouts have eradicated it from Landing Channel and continue to keep it in check, preventing further spread.

### WHAT TO LOOK FOR

Water chestnut forms floating rosettes of glossy, triangular leaves with toothed edges.

These rosettes often cluster into dense mats on the water's surface, blocking

sunlight and crowding out native vegetation. The plant is best removed in early to mid-summer, before it produces hard, spiny seeds. Once released, these seeds can remain viable in the lake sediment for years, fueling new plant growth and future infestations.



### SEE IT? REPORT IT

If you see water chestnut in Lake Hopatcong, report it to [info@lakehopatcongfoundation.org](mailto:info@lakehopatcongfoundation.org). Providing dock numbers, landmarks, or coordinates is helpful.

### BECOME A WATER SCOUT

Help protect Lake Hopatcong by joining the Water Scouts Program. Volunteers play a direct role in protecting the lake by learning to identify invasive species, monitoring key areas of the lake, and assisting with removal efforts. For more information, visit [lakehopatcongfoundation.org](http://lakehopatcongfoundation.org).



## KEEP INVASIVE SPECIES OUT

The invasive species below are not currently in Lake Hopatcong—help keep it that way. After every trip, check your boat and gear for hitchhiking plants and organisms.

Early detection is key to stopping an infestation before it spreads. If you think you have seen one of these species in Lake Hopatcong, report it to [info@lakehopatcongfoundation.org](mailto:info@lakehopatcongfoundation.org).

### HYDRILLA

Hydrilla is an aggressive plant that forms dense underwater mats, crowding out native species and interfering with recreation. Even a small fragment can start a new infestation.

To identify it, look for 4 to 8 leaves arranged in a circle (whorl) around the stem and a rough, scratchy texture. Common waterweed, a native species found in Lake Hopatcong that is sometimes mistaken for hydrilla, typically has 3 leaves per whorl and a smooth texture.



### SPINY WATER FLEA

Spiny water fleas are tiny invasive zooplankton that disrupt the aquatic food web by feeding on native plankton, an important food source for fish. They often cling to fishing gear such as lines, nets, and anchor ropes. They appear as small, gelatinous clusters with a spiny tail.



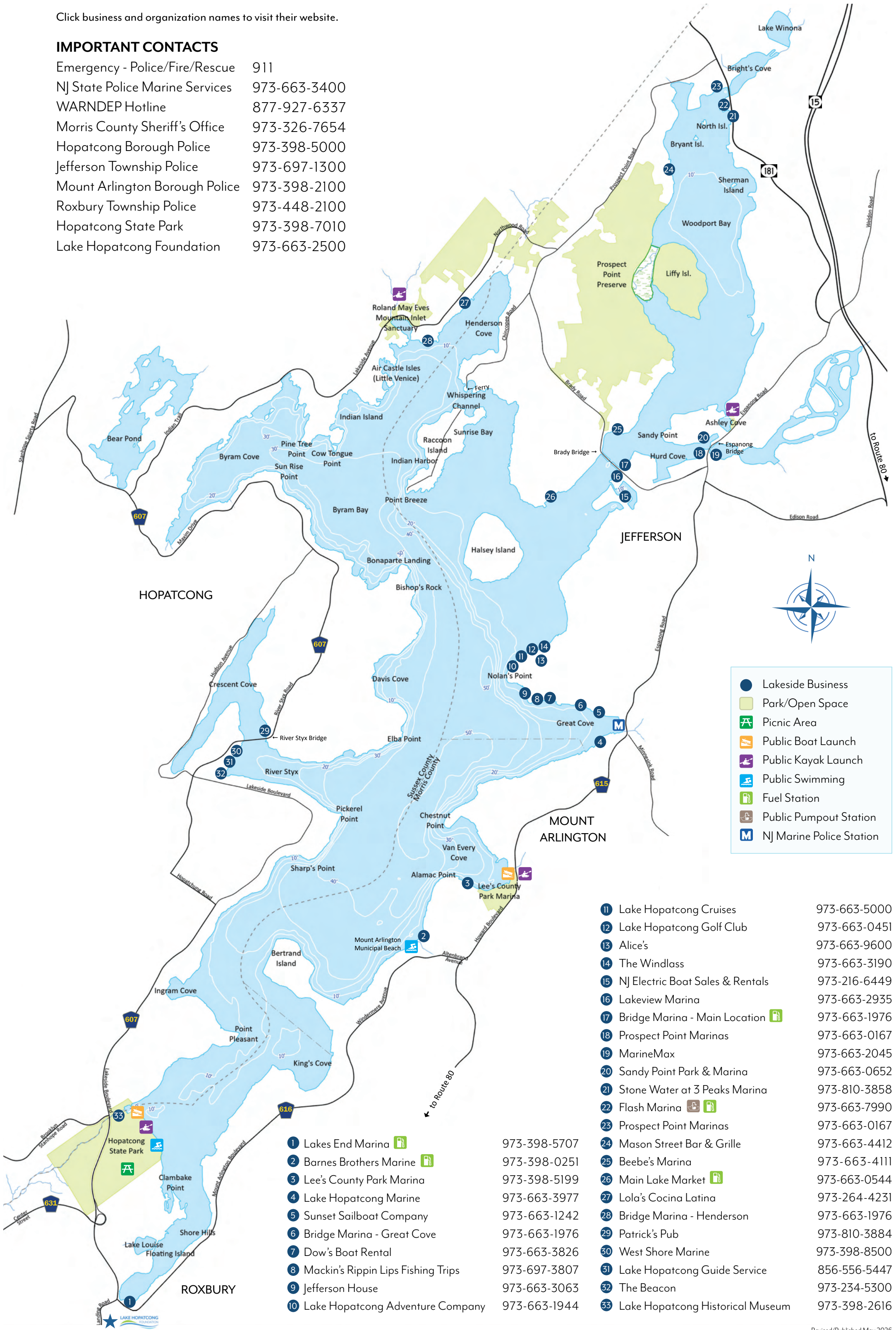
Photo by DFWI & J. Gunderson, MN Sea Grant

# LAKE HOPATCONG GUIDE MAP

Click business and organization names to visit their website.

## IMPORTANT CONTACTS

Emergency - Police/Fire/Rescue	911
NJ State Police Marine Services	973-663-3400
WARNDP Hotline	877-927-6337
Morris County Sheriff's Office	973-326-7654
Hopatcong Borough Police	973-398-5000
Jefferson Township Police	973-697-1300
Mount Arlington Borough Police	973-398-2100
Roxbury Township Police	973-448-2100
Hopatcong State Park	973-398-7010
Lake Hopatcong Foundation	973-663-2500



	Lakeside Business
	Park/Open Space
	Picnic Area
	Public Boat Launch
	Public Kayak Launch
	Public Swimming
	Fuel Station
	Public Pumpout Station
	NJ Marine Police Station

11	Lake Hopatcong Cruises	973-663-5000
12	Lake Hopatcong Golf Club	973-663-0451
13	Alice's	973-663-9600
14	The Windlass	973-663-3190
15	NJ Electric Boat Sales & Rentals	973-216-6449
16	Lakeview Marina	973-663-2935
17	Bridge Marina - Main Location	973-663-1976
18	Prospect Point Marinas	973-663-0167
19	MarineMax	973-663-2045
20	Sandy Point Park & Marina	973-663-0652
21	Stone Water at 3 Peaks Marina	973-810-3858
22	Flash Marina	973-663-7990
23	Prospect Point Marinas	973-663-0167
24	Mason Street Bar & Grille	973-663-4412
25	Beebe's Marina	973-663-4111
26	Main Lake Market	973-663-0544
27	Lola's Cocina Latina	973-264-4231
28	Bridge Marina - Henderson	973-663-1976
29	Patrick's Pub	973-810-3884
30	West Shore Marine	973-398-8500
31	Lake Hopatcong Guide Service	856-556-5447
32	The Beacon	973-234-5300
33	Lake Hopatcong Historical Museum	973-398-2616

1	Lakes End Marina	973-398-5707
2	Barnes Brothers Marine	973-398-0251
3	Lee's County Park Marina	973-398-5199
4	Lake Hopatcong Marine	973-663-3977
5	Sunset Sailboat Company	973-663-1242
6	Bridge Marina - Great Cove	973-663-1976
7	Dow's Boat Rental	973-663-3826
8	Mackin's Rippin Lips Fishing Trips	973-697-3807
9	Jefferson House	973-663-3063
10	Lake Hopatcong Adventure Company	973-663-1944